



# Upgrade Guide



**Contents**

About .....2

System Requirements.....2

Upgrading Rapid Insight Data Integration to Veera During Installation .....3

Upgrading Rapid Insight Data Integration to Veera After Installation .....3

**Complete Upgrade Directly From DI** .....3

**Complete Upgrade From DI Backup (recommended)** .....4

**Upgrade a Single DI Exported Job** .....6

## About

### Rapid Insight® Veera

Rapid Insight®'s Visual Engine for Enterprise Reporting and Analysis (Veera) is a powerful tool that turns data into meaningful information. Veera will:

- Merge and integrate data from any single source or from multiple disparate data sources
- Transform data into workflow processes
- Create jobs and reports that can be easily shared with colleagues
- Simplify data and reporting needs

### Installation and Instructions

There are two primary elements within Veera; the Organizational Workspace and the Job Workspace. Both elements are part of the application and run on a Windows Workstation. The Veera application is installed using the Veera Setup Wizard. After successfully installing Veera, the user will be prompted to enter the license and registration information.

This Installation Guide provides installation, licensing, and registration instructions as well as instructions for transferring a named user license to new hardware.

### System Requirements

Veera requires that the following criteria be met prior to the installation:

- Windows XP or later
- .NET Framework 2.0 and its requirements
- 2 GHz 32-bit (x86) or 64-bit (x64) processor
- 1 GB of system memory (4 GB is ideal)
- 20 MB available hard drive space (1 GB of available hard drive space is ideal)
- 32 MB of graphics memory (512 MB is ideal)
- Internet access

## Upgrading Rapid Insight® Data Integration to Veera During Installation

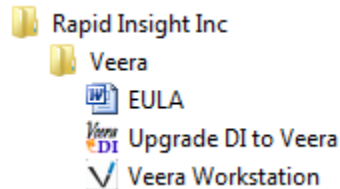
As Veera is first being installed, it searches for prior installations of Data Integration. If found, the user will be offered the opportunity to import all connection and job information from DI directly into Veera. Note that this option does not affect the original DI files in any way and is identical to the “Complete Upgrade Directly fro DI” option described in the following section.

## Upgrading Rapid Insight® Data Integration to Veera After Installation

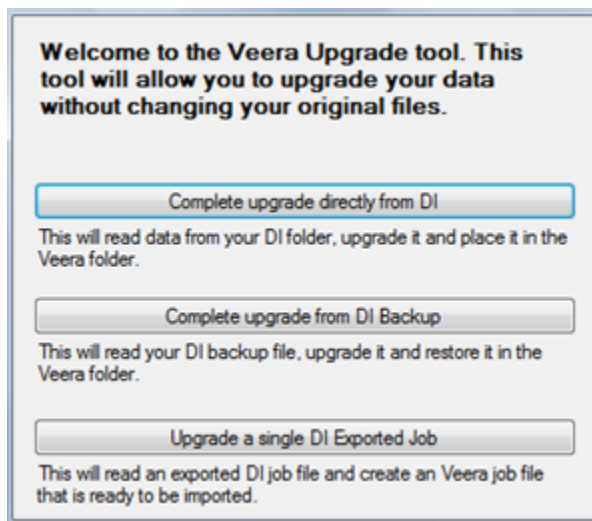
The following is a step by step guide to upgrading a current license of Data Integration(DI) to the newest version of Veera.

### Complete Upgrade Directly From DI

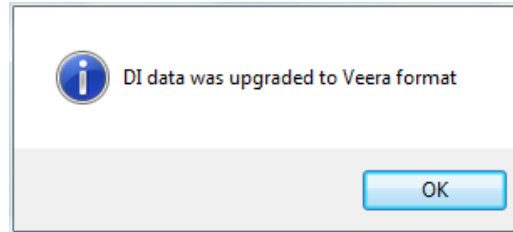
1. To start the upgrade process, run the upgrade option from the programs menu on the desktop or laptop to be upgraded.



2. To initiate an entire upgrade from DI to Veera chose the first option. The other two options will be discussed later in this document.

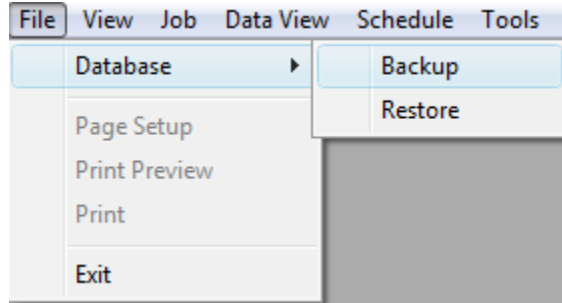


3. The upgrade may take a few minutes depending on the amount of data to convert. Once it has completed, the following message will appear to confirm the upgrade.

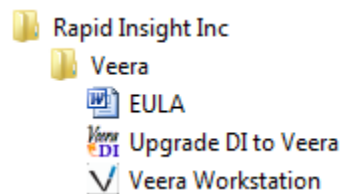


### Complete Upgrade From DI Backup (recommended)

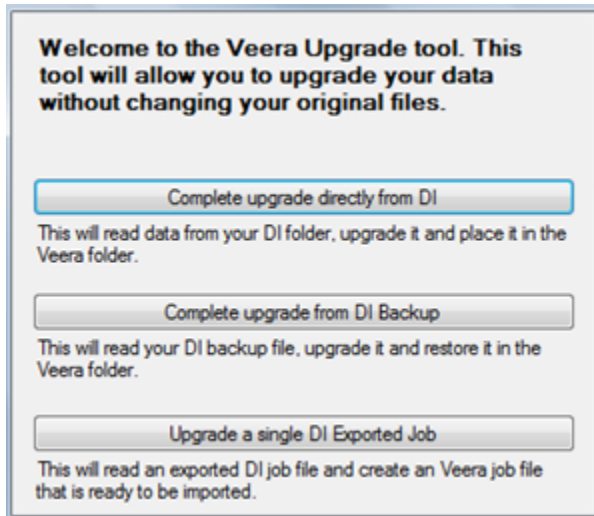
1. In order to upgrade using this option a backup from DI is required. To do this, open Data Integration and chose the following option to create a backup file.



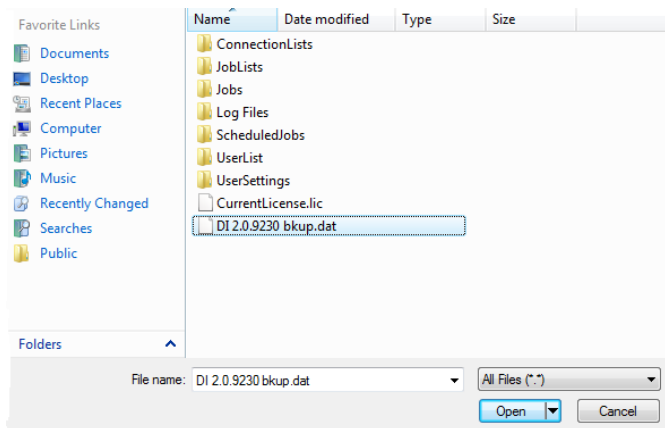
2. Follow the process to create the backup file and close DI when the file has been created.
3. To start the upgrade process, run the upgrade option from the programs menu on the desktop or laptop to be upgraded.



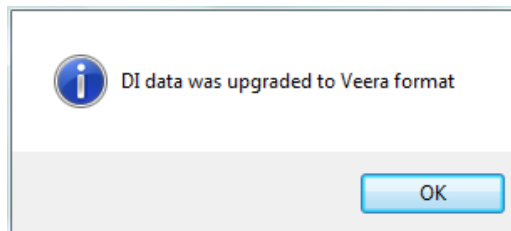
4. To initiate an upgrade from backup copy of DI chose the second option.



5. The system will prompt the user to select the backup file to upgrade from. Locate the backup file that was created in DI and click continue to initiate the upgrade.

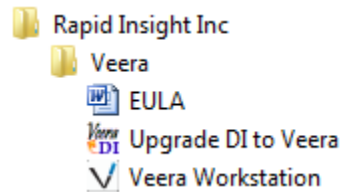


6. The upgrade may take a few minutes depending on the amount of data to convert. Once it has completed, the following message will appear to confirm the upgrade.

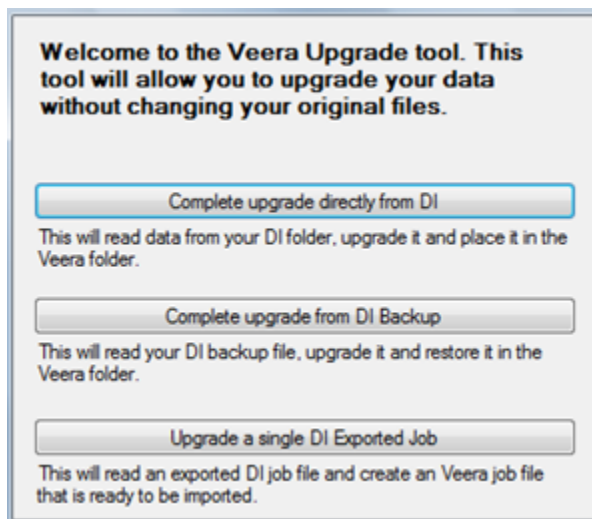


## Upgrade a Single DI Exported Job

1. Similar to upgrading from a backup, the option to upgrade a single DI job requires that the user know which job to export and where the export has been placed.
2. Open DI and chose the job or jobs that are to be upgraded. Export the job(s) and save the files in a folder on the system.
3. Once the desired job has been exported, follow the process below to upgrade that job to Veera.
4. Run the upgrade option from the programs menu on the desktop or laptop to be upgraded.



5. To initiate an upgrade of a single DI job chose the third option.



6. The system will prompt the user to select the exported job to upgrade from. Locate the job file that was created in DI and click continue to initiate the upgrade.
7. The upgrade may take a few minutes depending on the amount of data to convert. Once it has completed, the following message will appear to confirm the upgrade.

